

ASG-WORKLOAD ANALYZER™

For Precise Workload Analysis

OVERVIEW

Implementing ASG-Workload Analyzer™ in a data center can completely change the efficiency of business operations. This innovative solution offers graphical tools that allow quick and precise tracking of processing performance. With ASG-Workload Analyzer, an organization can scrutinize, measure effectiveness, recognize problem areas, and do something about the way they handle data processes. ASG-Workload Analyzer eliminates wasted time and takes control of how an organization manages its workload. ASG-Workload Analyzer employs a flexible approach when presenting information. Users can choose display information from data stored in mainframe-resident databases, and select at which detail level to begin the analysis. Once started, users can then drill-down for additional detail on any process, or zoom-back for an overall perspective. Additionally, ASG-Workload Analyzer can overlay actual execution results with predicted executions made within the scheduling system.

ASG-Workload Analyzer is designed to significantly reduce the amount of time that staffs spend analyzing and resolving errors. To simplify the process, color-coded graphs visually display any errors. The errant processes are highlighted for quick identification and can be viewed in the context of when they occurred and what other processes were active.

BENEFITS

- Provides complete current and post-production analysis
- Analyzes all jobs, both scheduled and unscheduled
- Graphically identifies long- and short-term trends
- Provides extensive, user-definable filtering
- Offers the definition of exception-based reporting
- Provides service level information in easy-to-understand graphs
- Includes an easy-to-use query manager
- Allows specific data selection required for analysis

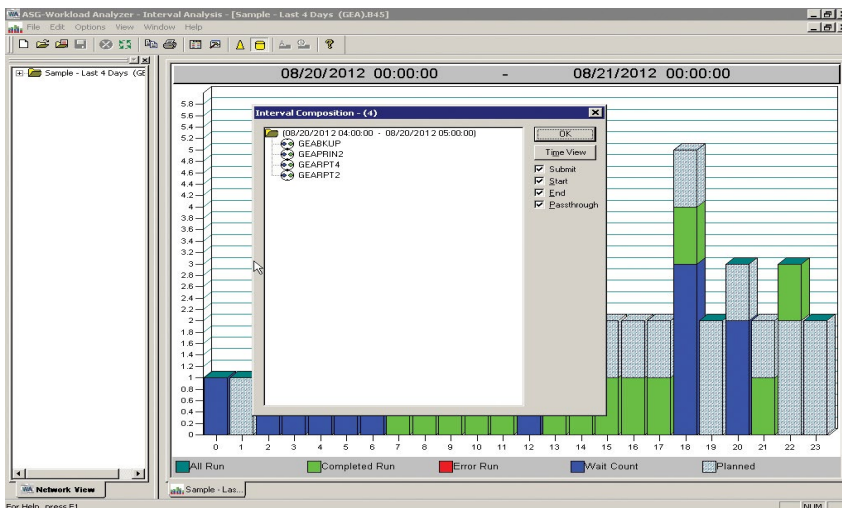
TECHNICAL SPECIFICATIONS

SUPPORTED ENVIRONMENTS

- z/OS
- Online Access: ISPF, CICS, native TSO and Roscoe
- Type 3 or 4 Service
- APF Authorized Library

SUPPORTED PROTOCOLS

- IBM or IBM-compatible PC



Graphics make it easier to have a clear understanding of actual processing workload.

In addition, to quickly identify recurring problems, user-definable data can be viewed. ASG-Workload Analyzer utilizes a comprehensive set of color-coded graphs that represent the results of processing activities. These include the following:

- Network View provides an alphabetized color-coded list of activities
- Interval Analysis provides information in time-based intervals
- Time View provides detailed information on when activities occurred
- Time History provides an overview of all processing for specified time periods
- Step View provides detailed information on the steps of a job
- Job View provides detailed information on all submissions of an activity
- Job History provides trend analysis for an activity across days
- Sysout View provides access to all of the Sysout information for a job

MANAGEMENT BY EXCEPTION

ASG-Workload Analyzer provides extensive, user-definable filtering for the definition of exception-based reporting. Exception-based queries can be defined and saved. ASG-Workload Analyzer can overlay planned workload execution on top of the actual execution results. The operator can select the information to be displayed based on exception conditions. Because only information pertinent to an exception condition is displayed, analysis time is significantly reduced. A pre-established set of exception queries allows automatic exception reporting. These characteristics make variations from the forecasted plan readily visible.

DRILL-DOWN ANALYSIS AND GRAPHICAL METRICS

ASG-Workload Analyzer employs a built-in, drill-down analysis approach in which graphical visualizations can be manipulated using the drag-and-zoom feature. Using this organized and methodical process, problem resolution and processing analysis is easily conducted. When required, more specific details are available.

ASG-Workload Analyzer provides a predefined, comprehensive set of both overview and detailed graphs. It presents color-coded processing information in a manner that operations staff can use and understand. Users can go from total number of errors for a processing period to specific process information without leaving the ASG-Workload Analyzer graphical interface. Because errant processes are readily distinguishable from successful processes, anomalies and inconsistencies can easily be identified – reducing overall analysis time.

SERVICE LEVEL AGREEMENT REPORTING

ASG-Workload Analyzer provides service level information in an easy-to-understand graphical format. Filters provide execution results for a predefined set of tasks. Tracking service level performance is automatic, and overview or detailed graphical information can be provided.

FOLLOW US



www.asg.com

ASG Technologies is a global software company providing the only integrated platform and flexible end to end solution for the information powered enterprise. ASG is the only solutions provider for both Information Management and IT Systems and has over 3,500 customers worldwide. To learn more visit www.asg.com.

ASG Technologies | 1.239.435.2200 or 1.800.932.5536 | 708 Goodlette Road North, Naples, Florida USA 34102 | www.asg.com

© 2019 ASG Technologies Group, Inc.

All products mentioned are trademarks or registered trademarks of their respective holders.

ASG_Workload_Analyzer_20191029en